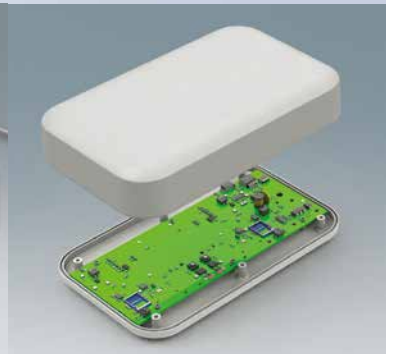


OKW
GEHÄUSE
SYSTEME



FOR CONTEMPORARY DESKTOP APPLICATIONS

THE PRODUCT

The new EVOTEC enclosure range offers a contemporary desktop application.

With their robust construction and yet attractive design, these plastic enclosures are ideal for tough working environments. Different operating fronts offer enormous scope for design.

You can choose between versions with a flat top part and desktop versions with an operating panel ergonomically inclined at 12°.

YOUR ADVANTAGE

This range of enclosures has a generously dimensioned operating panel on the front. There is sufficient space here for switches, pushbuttons or touch displays.

Gentle contours (with many different fine features) guarantee an elegant visual impression.

PCBs can be installed in the top part or in the bottom part.

High-quality ASA+PC-FR with high UV protection in the standard colour off-white (RAL 9002).

MATERIAL / COLOUR

- ASA+PC-FR (UL 94 V-0), off-white (RAL 9002)

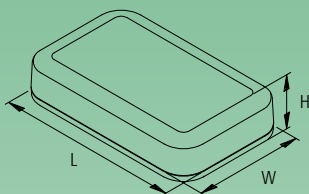
Outside dim. in mm

166 x 64 x 31 mm (L x W x H)

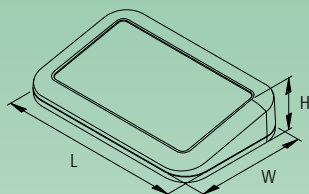


MODERN, ROBUST DESIGN

FLAT



DESKTOP



YOUR ADVANTAGE

Thanks to an optionally available seal, the enclosure range achieves the high protection class IP 65.

Desktop version with / without recessed operating panel to protect the membrane keypad / decor foil.

High degree of stability

Rubber feet ensure stable positioning on the desktop.

Screw fastening with stainless steel screws and Torx drive.

APPLICATIONS

Measuring technologie.

Control technologie.

Medical and laboratory technologie.

Environmental technologie.

For drawings and 3D models visit www.okw.com