



Quality Products. Service Excellence.

Hand Held Enclosures 1599 Series

Flame Retardant ABS w/ PCB Standoffs, Battery Compartments

Features

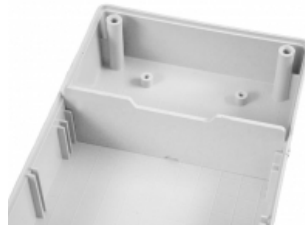


- Attractively styled and ergonomically designed for use as a "hand-held" instrument enclosure.
- Standard version is molded from flame retardant ABS plastic (rated UL94V-0) and is assembled with machine screws into integral brass bushings.
- Economy version is molded from economical plastic (not flame retardant) and is assembled with self-tapping screws into plastic posts.
- Recessed top for membrane display or pad.
- Lap joint construction provides protection against access of dust and splashing water.
- Extra deep top and ultra shallow base are specifically designed to enhance the aesthetics of the enclosure and provide the user with flexibility and assembly efficiency.
- Designed to meet IP54.
- Two keyhole knockouts are molded into the inside of the base to facilitate wall mounting installation.
- If EMI/ RFI shielding is required, try **1599RFI series**

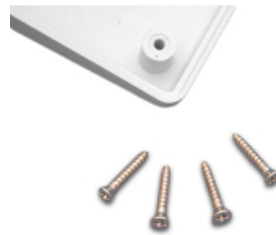
Photo Features



Optional accessories include belt clips and battery dividers.



Standard models use machine screws into brass bushings. Economy models use self tapping screws.



All sizes available with or without battery door. All models have PC board standoffs on the inside top and bottom.



Accessories

Screws

- Accessory screws for mounting P.C. boards into standoffs (#4 x 1/4" pan head) P/N **1593ATS50** (qty. 50), P/N **1593ATS100** (qty. 100).
- Replacement machine screw, used in flame retardant ABS 1599B series (ie...with brass inserts). M3 - 0.5 x 20 mm **1594MS100** - Package of 100 or **1594MS100BK** (black oxide) Package of 100.

- Replacement machine screw, used in flame retardant ABS 1599E, H & K series (ie...with brass inserts). M3 - 0.5 x 12 mm **1599HMS100** - (nickel plated) Package of 100 or **1599HMS100BK** (black oxide) Package of 100.

Optional Battery Holders



- Designed for our battery door enclosure (part numbers ending in BAT).
- Includes all the parts required to install the battery or batteries.
- Includes the battery holder, wires and foam anti-rattle pad.
- Refer to "Battery Holder Compatibility" table below.

Optional Battery Dividers



- Grey ABS plastic panel barriers.
- Insert vertically into the P.C. card guides.
- Sold individually.
- Refer to "Enclosures" table below for compatibility.

Optional Belt Clip



Black **1599CLIP**

Gray: **1599CLIPGY**

- Molded from tough nylon (choice of Black or Grey).
- Includes 2 nylon screws (insulated to avoid internal interference).
- Mounting template included.
- Part numbers ending in "CP" come with these clips installed. All other 1599 enclosures are compatible.

Enclosures

Standard	Economy	Color	Battery Door	Belt Clip Included	Length	Width	Depth	Battery Divider
1599BBK		Black	No	No	130	65	25	1599BD-BULK
1599BGY	1599BSGY	Grey	No	No	130	65	25	1599BD-BULK
1599BBKBAT		Black	Yes	No	130	65	25	1599BD-BULK
1599BGYBAT	1599BSGYBAT	Grey	Yes	No	130	65	25	1599BD-BULK
1599BBKCP		Black	No	Yes	130	65	25	1599BD-BULK
1599BGYCP		Grey	No	Yes	130	65	25	1599BD-BULK
1599BBKBATCP		Black	Yes	Yes	130	65	25	1599BD-BULK
1599BGYBATCP		Grey	Yes	Yes	130	65	25	1599BD-BULK
1599EBK		Black	No	No	170	85	34	1599ED-BULK
1599EGY	1599ESGY	Grey	No	No	170	85	34	1599ED-BULK
1599EBKBAT		Black	Yes	No	170	85	34	1599ED-BULK
1599EGYBAT	1599ESGYBAT	Grey	Yes	No	170	85	34	1599ED-BULK
1599HBK		Black	No	No	220	110	44	1599HD-BULK
1599HGY	1599HSGY	Grey	No	No	220	110	44	1599HD-BULK
1599HBKBAT		Black	Yes	No	220	110	44	1599HD-BULK
1599HGYBAT	1599HSGYBAT	Grey	Yes	No	220	110	44	1599HD-BULK
1599KBK		Black	No	No	220	140	41	
1599KGY	1599KSGY	Grey	No	No	220	140	41	
1599KBKBAT		Black	Yes	No	220	140	41	
1599KGYBAT	1599KSGYBAT	Grey	Yes	No	220	140	41	

Battery Holder Compatibility

Part Number	Battery Holder Kit For:	Fits Battery Door Enclosure Size:
-------------	-------------------------	-----------------------------------

Part Number	Battery Holder Kit For:	Fits Battery Door Enclosure Size:
BH1AAW	1 AA Cell	1599E, 1599H & 1599K series
BH2AAW	2 AA Cells	1599E, 1599H & 1599K series
BH3AAW	3 AA Cells	1599H & 1599K series
BH4AAW	4 AA Cells	1599H & 1599K series
BH1AAAW	1 AAA Cell	1599B, 1599E, 1599H & 1599K series
BH2AAAW	2 AAA Cells	1599B, 1599E, 1599H & 1599K series
BH3AAAW	3 AAA Cells	1599E, 1599H & 1599K series
BH4AAAW	4 AAA Cells	1599H & 1599K series
BS61	1 - 9V Cell	1599B, 1599E, 1599H & 1599K series

Data subject to change without notice

© 2019. Hammond Manufacturing Ltd. All rights reserved.