



*Quality Products. Service Excellence.*

## Steel Chassis 1441 Series

Powder Coated, Real Walnut Side Option



**Classic**

**RoHS**

### Key Features

- Spot welded steel - heavy duty construction chassis.
- Finished in ASA 61 smooth grey or satin black powder paint.
- Optional bottom plates are punched with 4 holes – 3/16" diameter (Chassis now includes 1/8" holes to allow installation of optional bottom plates).
- Hardware not provided, please order separately - Part number **1421J6** (Pkg. of 6, 6-32 Philips head screws).
- Rubber feet sold separately
- Some models accept chassis covers (1451 series)
- UPGRADE to our Satin Black Chassis with Walnut Sides (available for some sizes, refer to table below)

### Photo Features



Chassis available in black or gray.

Six models available with walnut sides (see table below for compatibility).



Perforated covers for most sizes. Bottom panels available for all sizes (sold separately from chassis).

### Accessories

- Replacement Sheet Metal Screws

## Chassis

Satin Black Chassis							Gray	Satin Black	Gray Perforated	Satin Black
Gray Chassis	Satin Black Chassis w/ Walnut Sides	Steel Gauge	Width	Depth	Height	Bottom Panel	Bottom Panel	Chassis Cover	Perforated Chassis Cover	
1441-6	1441-6BK3	20	102	102	51	1431-6	1431-6BK3			
1441-8	1441-8BK3	20	152	102	51	1431-8	1431-8BK3			
1441-12	1441-12BK3	1441-12BK3CWW	20	178	127	51	1431-12	1431-12BK3		
1441-9	1441-9BK3		20	203	102	25	1431-10	1431-10BK3	1451-10	1451-10BK3
1441-10	1441-10BK3		20	203	102	51	1431-10	1431-10BK3	1451-10	1451-10BK3
1441-14	1441-14BK3		20	229	127	51	1431-14	1431-14BK3	1451-14	1451-14BK3
1441-15	1441-15BK3		20	254	152	25	1431-16	1431-16BK3	1451-16	1451-16BK3
1441-16	1441-16BK3	1441-16BK3CWW	20	254	152	51	1431-16	1431-16BK3	1451-16	1451-16BK3
1441-22	1441-22BK3	1441-22BK3CWW	20	305	203	51	1431-22	1431-22BK3	1451-22	1451-22BK3
1441-24	1441-24BK3	1441-24BK3CWW	20	305	203	76	1431-22	1431-22BK3	1451-22	1451-22BK3
1441-29	1441-29BK3		20	305	254	51	1431-29	1431-29BK3	1451-29	1451-29BK3
1441-18	1441-18BK3		20	343	127	51	1431-18	1431-18BK3		
1441-26	1441-26BK3		20	406	203	51	1431-26	1431-26BK3	1451-26	1451-26BK3
1441-28	1441-28BK3		20	406	203	76	1431-26	1431-26BK3	1451-26	1451-26BK3
1441-20	1441-20BK3		20	432	102	76	1431-20	1431-20BK3		
1441-30	1441-30BK3		20	432	254	51	1431-30	1431-30BK3	1451-30	1451-30BK3
1441-32	1441-32BK3	1441-32BK3CWW	20	432	254	76	1431-30	1431-30BK3	1451-30	1451-30BK3
1441-33	1441-33BK3	1441-33BK3CWW	20	432	254	102	1431-30	1431-30BK3	1451-30	1451-30BK3
1441-34	1441-34BK3		18	432	305	51	1431-34	1431-34BK3		
1441-36	1441-36BK3		18	432	305	76	1431-34	1431-34BK3		
1441-38	1441-38BK3		18	432	356	76	1431-38	1431-38BK3		
1441-40	1441-40BK3		18	432	356	102	1431-38	1431-38BK3		
1441-42	1441-42BK3		18	432	356	127	1431-38	1431-38BK3		

Data subject to change without notice

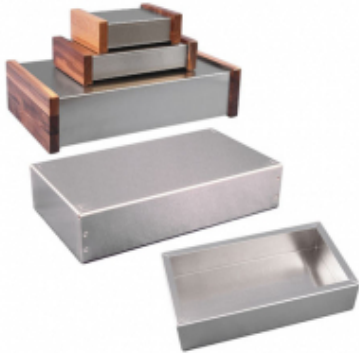
© 2019. Hammond Manufacturing Ltd. All rights reserved.



*Quality Products. Service Excellence.*

## Aluminum Chassis 1444 Series

Aluminum Body, Walnut Side Option



### Key Features

- Spot welded - heavy duty construction chassis.
- Natural aluminum finish (as shown above) - also available in painted steel with walnut side panels).
- Side panels are made from solid walnut and routed out to fit over ends of chassis (pre-punched for easy mounting).
- Walnut side panels attach with four machine screws & lockwashers (included) into metal inserts to avoid wood damage. Screws should not be torqued past 4.43 lbf.in ( 50 cN.m).
- Usable surface of chassis front, back and top are reduced by roughly 7/8" (22 mm) due to inset in walnut sides.
- Optional bottom plates are punched with 4 holes – 3/16" diameter.
- Bottom plate hardware not provided, please order separately - Part number **1421J6** (Pkg. of 6, 6-32 Philips head screws).
- NOTE: our steel chassis covers (1451 series) are NOT compatible with this series.

### Photo Features



Six sizes available with walnut sides.



Standard version shown inside and out.



Optional bottom panels available for all sizes.



Protective covering on aluminum is perfect as a layout tool.

### Accessories

- Replacement Sheet Metal Screws

### Part Numbers

Chassis	Chassis w/ Walnut Sides	Aluminum Thickness	Width	Depth	Height	Bottom Plate
1444-6		1	102	102	51	1434-6
1444-45351		1	114	89	25	1434-4535
1444-542		1	127	102	51	1434-54
1444-6415		1	152	102	38	1434-8
1444-8		1	152	102	51	1434-8
1444-643		1	152	102	76	1434-8
1444-12	1444-12CWW	1	178	127	51	1434-12
1444-753		1	178	127	76	1434-12
1444-772		1	178	178	51	1434-77
1444-9		1	203	102	25	1434-10
1444-10		1	203	102	51	1434-10
1444-84515		1	203	114	38	1434-845
1444-862		1	203	152	51	1434-86
1444-14		1	229	127	51	1434-14
1444-972		1	229	178	51	1434-97
1444-9552		1	241	127	51	1434-955
1444-95525		1	241	127	64	1434-955
1444-9553		1	241	127	76	1434-955
1444-1053		1	254	127	76	1434-105
1444-15		1	254	152	25	1434-16
1444-16	1444-16CWW	1	254	152	51	1434-16
1444-10825		1	254	203	64	1434-108
1444-1172		1	279	178	51	1434-117
1444-1273		1	305	178	76	1434-127
1444-22	1444-22CWW	1	305	203	51	1434-22
1444-12825		1	305	203	64	1434-22
1444-24	1444-24CWW	1	305	203	76	1434-22
1444-29		1	305	254	51	1434-29
1444-12103		1	305	254	76	1434-29
1444-12123		1	305	305	76	1434-1212
1444-1372		1	330	178	51	1434-137
1444-18		1	343	127	51	1434-18
1444-1463		1	356	152	76	1434-146
1444-14103		1	356	254	76	1434-1410
1444-1573		1	381	178	76	1434-157
1444-1593		1	381	229	76	1434-159
1444-26		1	406	203	51	1434-26
1444-28		1	406	203	76	1434-26
1444-20		1	432	102	76	1434-20
1444-1763		1	432	152	76	1434-176
1444-1773		1	432	178	76	1434-177
1444-1783		1	432	203	76	1434-178
1444-30		1	432	254	51	1434-30
1444-32	1444-32CWW	1	432	254	76	1434-30
1444-33	1444-33CWW	1	432	254	102	1434-30
1444-17105		1	432	254	127	1434-30
1444-17123		1	432	305	76	1434-1712
1444-17132		1	432	330	51	1434-1713
1444-17133		1	432	330	76	1434-1713
1444-17134		1	432	330	102	1434-1713
1444-17135		1	432	330	127	1434-1713
1444-17143		1	432	356	76	1434-1714
1444-17154		1	432	381	102	1434-1715
1444-17156		1	432	381	152	1434-1715
1444-17173		1	432	432	76	1434-1717
1444-17174		1	432	432	102	1434-1717

Data subject to change without notice